

INSTALLATION INSTRUCTIONS

PART NUMBER: CSUV21-100PI GRILLE GUARD

APPLICATION: 2021-24 CHEVY SUBURBAN / TAHOE

QTY	PARTS LIST
1	CSUV21-100PI TVI/PB
10	½" x 1 ½" HEX HEAD BOLT
2	½" x 2" HEX HEAD BOLT
4	½" HEX NUT
10	½" LOCK WASHER
18	½" FLAT WASHER
4	3/8" x 2" HEX HEAD BOLT
8	3/8" FLAT WASHER
4	3/8" NYLON LOCK NUT
2	7/16" X 1 ½" HEX HEAD BOLT
2	7/16" LOCK WASHER
2	7/16" FLAT WASHER
1	CSUV21-100 LOWER LEFT FRAME BRACKET
1	CSUV21-100 LOWER RIGHT FRAME BRACKET
1	CSUV21-100 UPPER LEFT PEDESTAL MOUNT
1	CSUV21-100 UPPER RIGHT PEDESTAL MOUNT
1	CSUV21-100 UPPER LEFT EXTENTION MOUNT
1	CSUV21-100 UPPER RIGHT EXTENSTION MOUNT
2	CSUV21-100 PINCH CLAMP

****Inspect bumper and all parts prior to installation.**

-WARNING-

Special care should be exercised in the handling and installation of our products.

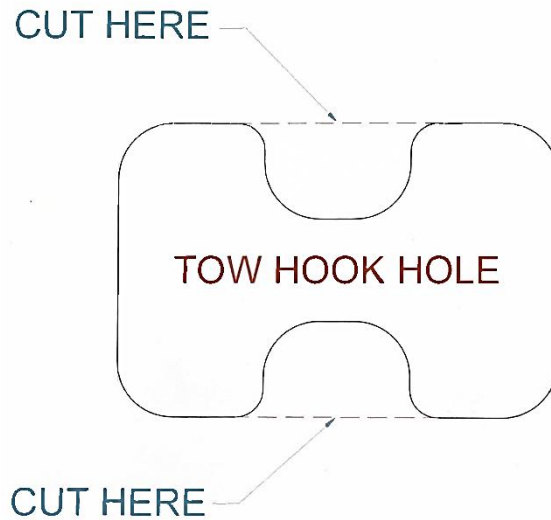
- Always wear safety glasses during installation process to avoid personal injury.
- Use extreme caution when lifting and securing product into place.
- Never position yourself directly under product during installation.
- Insulate all exposed wiring and electrical connectors.
- Always securely mount wiring harness to bumper and vehicle.
- Products may require minor trimming for proper fit.
- Periodically check nuts and bolts to make sure they remain tight.

CSUV21-100 GRILLE GUARD

2021-24 CHEVY SUBURBAN / TAHOE

INSTALLATION INSTRUCTIONS

1. Cut the plastic at the tow hook holes as shown in the diagram below.



2. Install the pinch clamp to the lower bracket as shown in the photo below.



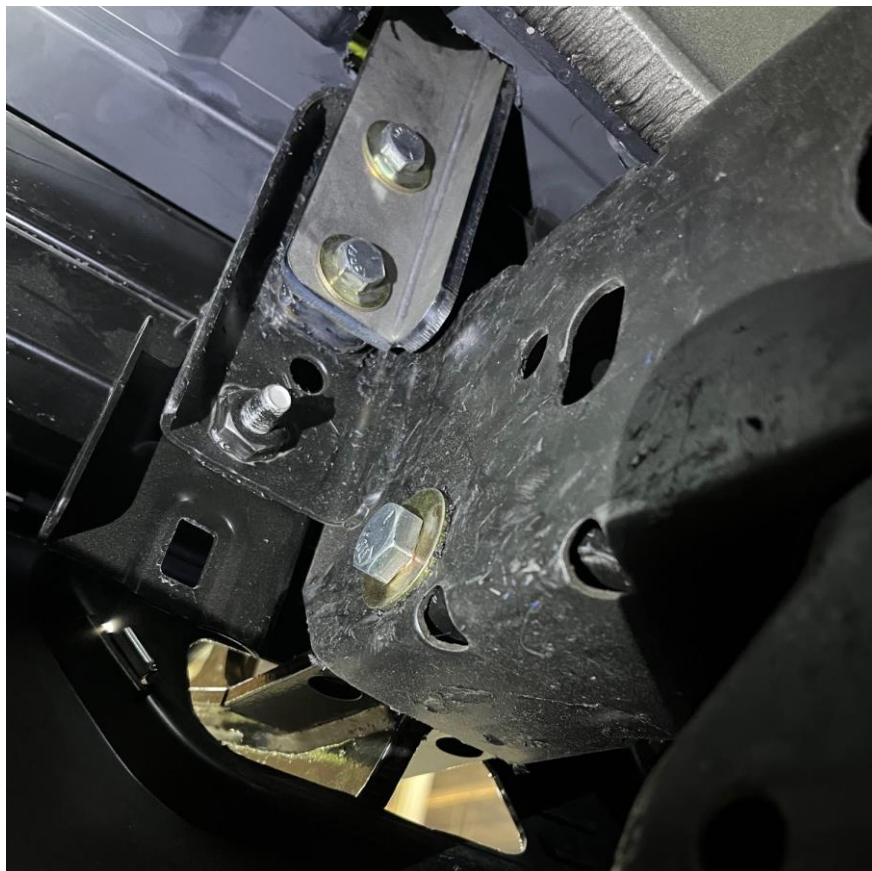
3. Insert the lower bracket through the tow hook and into the frame. Attach using the provided ½” hardware on the forward holes, and the provided 7/16” hardware on the rear hole. Tighten the pinch clamp first, then tighten the bolts passing through the frame.
4. Raise the hood and remove the two torx screws that retain the hood release and remove the handle. **Note: Do not close the hood until the handle is reinstalled.**
5. Remove the push pins that retain the plastic radiator cover and remove the cover.
6. Peer down behind the grille and mark the plastic shield as shown in the photo.



7. Cut the plastic shield as shown in the photo.



8. Pass the upper mount pedestal through the hole and attach it to the frame using the 3/8" hardware as shown in the photo.



9. Pass the upper mount extension through the grille and loosely bolt it to the upper pedestal.



10. Lift and bolt the guard to the brackets. Align the guard to the body lines of the truck and tighten all bolts.